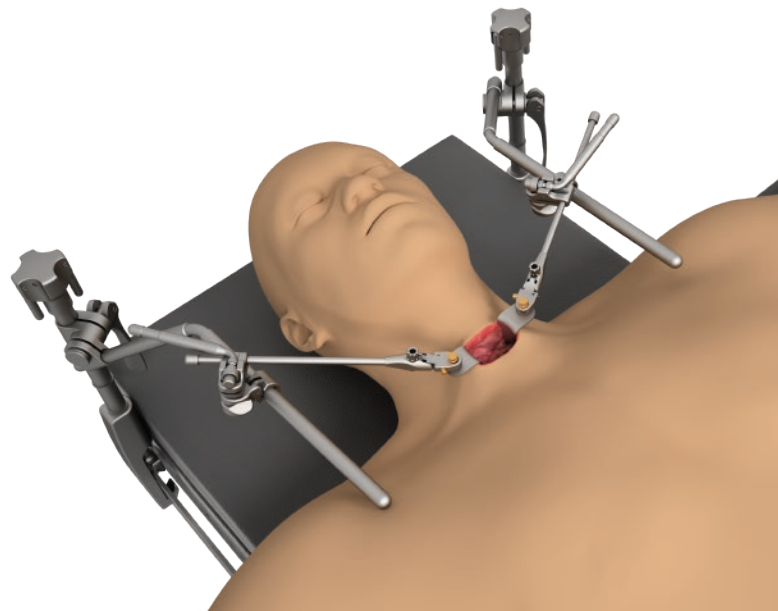


Cervical Spine Access

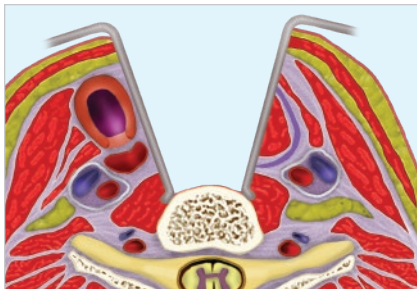
Central, Stable Exposure

The Thompson Retractor for cervical spine access offers secure, table mounted solutions that prevent shifting, or "rise up" in the incision. Independent retraction and blade positioning eliminates the need for excess retraction required by self-retaining retractors to stay in place. Thompson's Cervical System provides independent, safe retraction of the esophagus, trachea, and nerves, as well as the ability to elevate the longus colli.



*"I use the Thompson retractor on every anterior cervical case, even single level procedures. The set up takes me **less than 2 minutes** and the improved exposure and solid non-mobile retraction provided is phenomenal."*

- Vincent Traynelis, MD



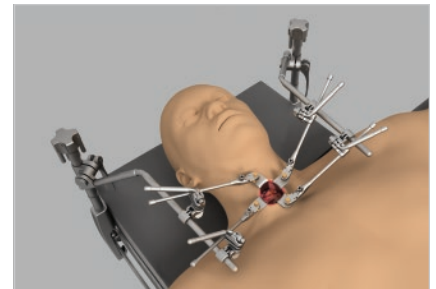
True Central Exposure

Independent blade positioning creates superior visibility with no retractor migration.



Eliminates Over-Retraction

Frame arms are independently adjusted, providing more control for safe, versatile, low profile retraction



Fast Set Up

Frame can be set up in under two minutes, and is ideal for single or multi-level procedures.



BLADE NOTICE

Color-coded anodized aluminum blades also available, call for more information.



CERVICAL SYSTEM (TITANIUM)

#SL82017

REF	QTY	ITEM DESCRIPTION	PART #
A	2	Elite III Rail Clamp w/1 Cam Joint 11"	43902ACS
B	2	20" Angled Arm (10" x 10") @ 45°	44120
C	4	Cam II Clip-on Quick Angle 8"	SL42126WGP
D	1	Micro-Adjustable II Clip-on Quick Angle 7 3/4"	SL45007CGP
E	2	T-Handle	60020
F	2	Manipulator Handle	42228
G	1	Extension Arm 12" with Snap Spring Joint	44012H
H	2	Rail Extender 15" Single Clamp	5844
	1	Instrument Case w/Pin Mat 22" x 11" x 3 1/2"	50000G
	2	Radiolucent Concave 23mm x 35mm	SL46312AT
I	2	Radiolucent Concave 23mm x 40mm	SL46314AT
	2	Radiolucent Concave 23mm x 45mm	SL46316AT
	2	Radiolucent Concave 23mm x 50mm	SL46318AT
	2	Radiolucent Concave 23mm x 55mm	SL46320AT
	2	Radiolucent Concave 23mm x 60mm	SL46322AT
	2	Radiolucent Concave 23mm x 65mm	SL46324AT
	2	Radiolucent Concave 23mm x 70mm	SL46326AT
	2	Radiolucent Concave 23mm x 75mm	SL46328AT
	2	Radiolucent Concave 23mm x 80mm	SL46330AT
	2	Radio. Conc. Longitudinal 23mm x 30mm	SL45160AT
	2	Radio. Conc. Longitudinal 23mm x 40mm	SL45161AT
J	2	Radio. Conc. Longitudinal 23mm x 50mm	SL45162AT

REF	QTY	ITEM DESCRIPTION	PART #
	2	Radio. Conc. Longitudinal 23mm x 60mm	SL45163AT
	2	Radio. Conc. Longitudinal 23mm x 70mm	SL45164AT
	2	Radio. Concave Micro 14mm x 35mm	SL46510AT
	2	Radio. Concave Micro 14mm x 40mm	SL46512AT
	2	Radio. Concave Micro 14mm x 45mm	SL46514AT
	2	Radio. Concave Micro 14mm x 50mm	SL46516AT
	2	Radio. Concave Micro 14mm x 55mm	SL46518AT
K	2	Radio. Concave Micro 14mm x 60mm	SL46520AT
	2	Radio. Concave Tapered 23mm x 35mm	SL45643AT
	2	Radio. Concave Tapered 23mm x 40mm	SL45644AT
	2	Radio. Concave Tapered 23mm x 45mm	SL45645AT
	2	Radio. Concave Tapered 23mm x 50mm	SL45646AT
	2	Radio. Concave Tapered 23mm x 55mm	SL45647AT
	2	Radio. Concave Tapered 23mm x 60mm	SL45648AT
	2	Radio. Concave Tapered 23mm x 65mm	SL45649AT
L	2	Radio. Concave Tapered 23mm x 70mm	SL45650AT
M	1	Radio. Midline Right 70mm x 83mm	SL45750AT
	1	Radio. Midline Left 70mm x 83mm	SL45751AT
N	1	Radiolucent Odontoid 20mm x 90mm	SL45666AT
O	1	Depth Gauge - Cervical	46521
	1	Instrument Case - Expanded Anterior Cervical	50000EAC



Visit us online: thompsonsurgical.com

For a Free Trial Call **1-800-227-7543** *

* Free trial valid for U.S. customers only. Customers outside the U.S.A., please call +1-231-922-0177 for availability.

© 2019 Thompson Surgical Instruments, Inc. Traverse City, Michigan.

® S-Lock®, PLA®, and the "T Circle" logomark are Registered Trademarks of Thompson Surgical Instruments, Inc. Patents: tpat.com

Rev B
093019
cstiss

