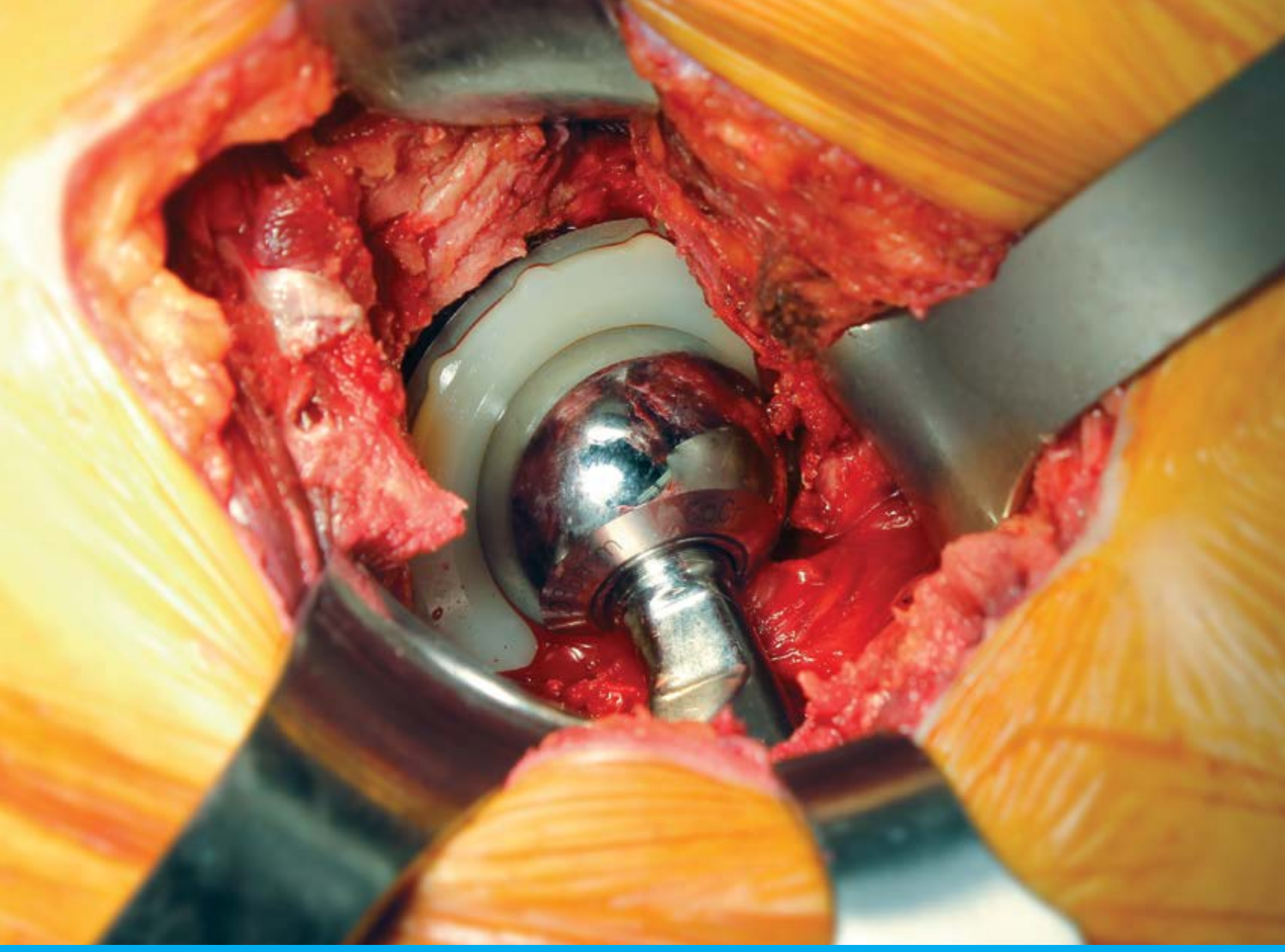


Thompson Retractor

Uncompromised Exposure™



Hip Catalog

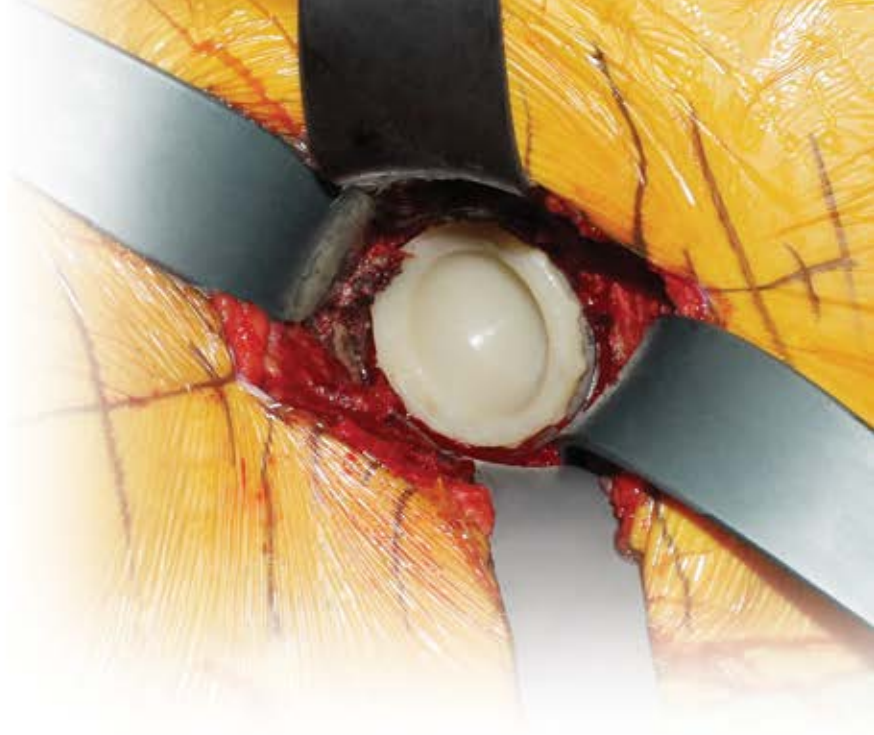
FIRST EDITION

Increase exposure for all hip procedures, including anterior, posterior, and lateral.

Hip Tether System

Flexible Hold with Fewer Hands Required

The Thompson Hip Tether System is ideal for orthopedic surgeons performing total hip replacement. This specialized system utilizes quick, flexible tethers to attach retractor blades to a stable table mounted frame, eliminating the need for extra staff to hold retractors. A low profile design and streamlined set up saves time and space.



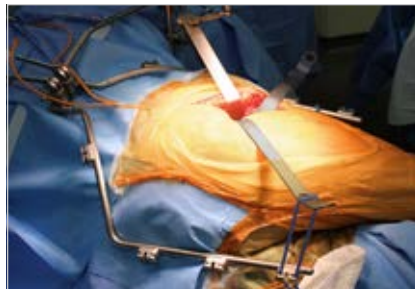
"The Thompson Hip System has an elegant design that optimizes the synergy between instrumentation and surgical technique allowing unimpeded visualization while performing muscle sparing (or minimally invasive) total hip arthroplasty."

- Mark J. Powers, MD, FACS, FAAOS



Sterile Mount

Mount and adjust the frame within the sterile field, using the Elite Rail Clamp.



Anatomically Designed Frame

Low profile, independent frame arms contour to patient anatomy.



Tethers

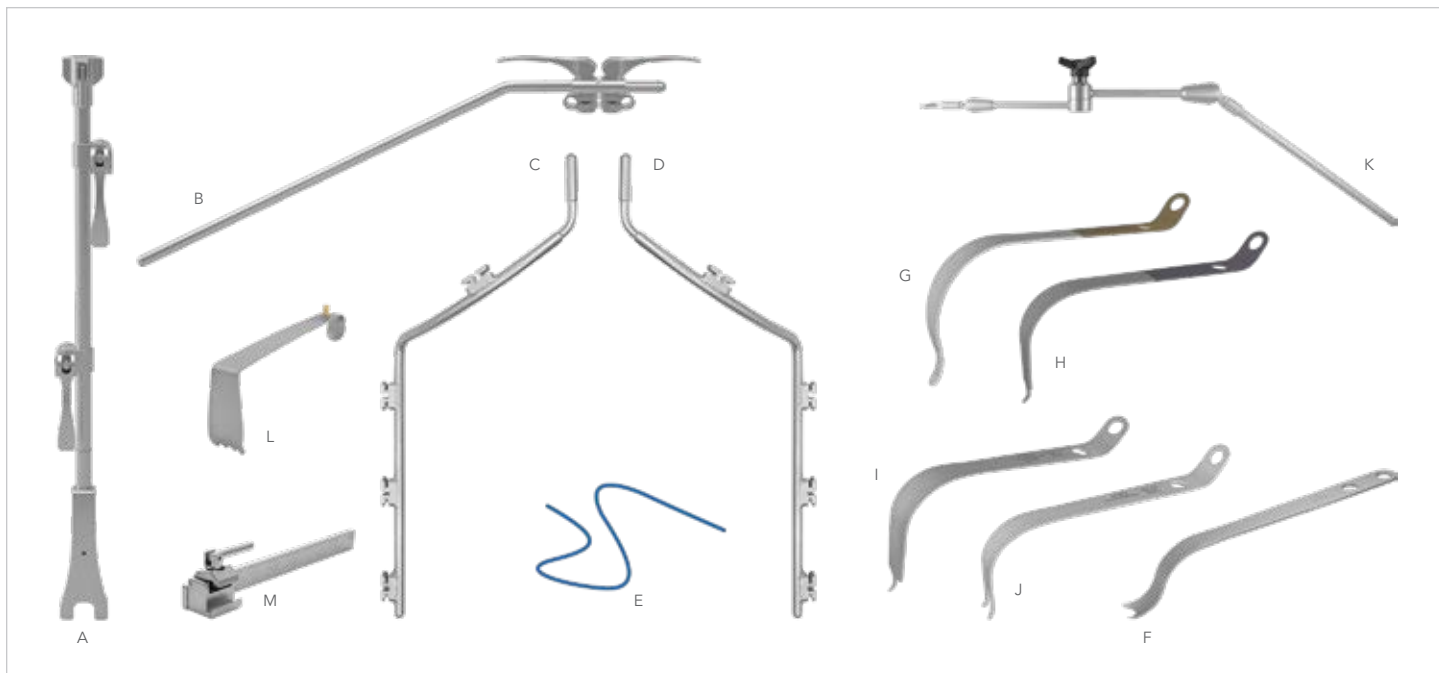
Quick set up with flexible attachment, using minimal components.



BLADE NOTICE

The Thompson Hip Tether System is compatible with any hip retractor blades.

Hip Tether System Components



HIP TETHER SYSTEM

#SL82014

REF	QTY	ITEM DESCRIPTION	PART #
A	1	Elite III Rail Clamp w/2 Cam Joints 22"	43905AC
B	1	Crossbar w/2 Cam Jts 7" x 19 1/2"	43990
C	1	20" Curved Arm with Cleats 1	44203
D	1	20" Curved Arm with Cleats 2	44204
E	2	24" Tethers - Pack of 5	42105
F	1	Femoral Neck Elevator	45300
G	2	Curved Cobra Gold 12 1/2"	45302C
H	2	Curved Hohmann Narrow Purple 12"	45306C

REF	QTY	ITEM DESCRIPTION	PART #
I	1	Curved Hohmann Wide 12"	45307
J	1	Curved Dual Prong 12"	45308
K	1	S-Lock Articulating Arm	SL42190
L	1	Hibbs w/Teeth Long 25mm x 75mm	SL46411T
M	1	Rail Extender 20" Single Clamp	41938
	1	Instrument Case 26" x 10" x 5"	50000BL
	1	Instrument Case 22" x 11" x 3 1/2"	50000G



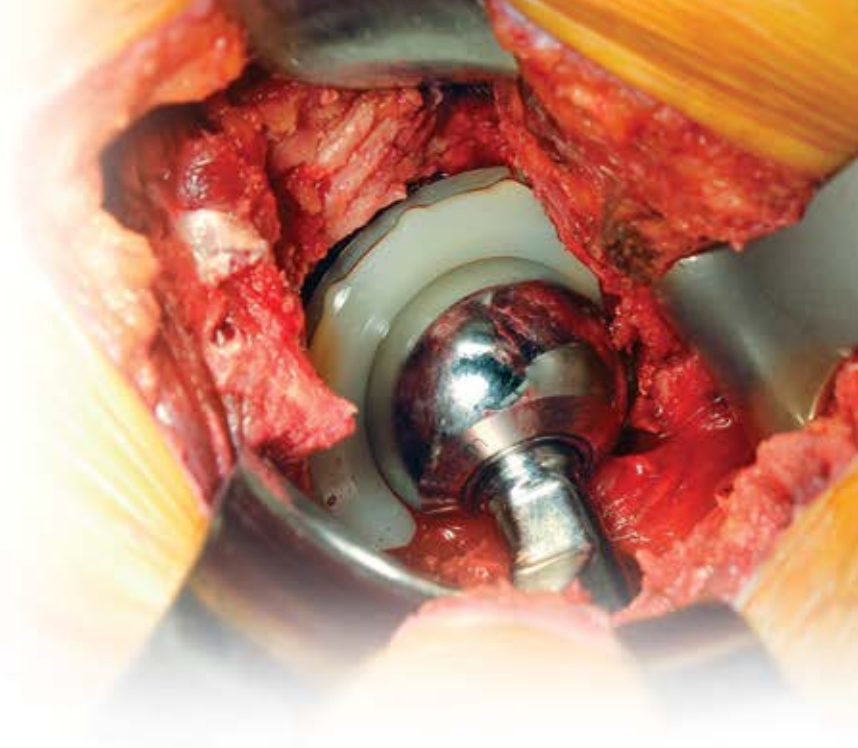
FRAME NOTICE

Add a Rail Extender (#41938) for compatibility with Hana® tables or leg positioning systems such as the Arch system.

Hip System

Firm Hold with Fewer Hands Required

The Thompson Hip System is ideal for orthopedic surgeons performing total hip replacement. This specialized system utilizes rigid handles to attach retractor blades to a stable, table mounted frame which eliminates the need for extra staff to hold retractors. A low profile design and streamlined set up saves time and space.



"By improving the direct visualization of the native landmarks during Direct Anterior Approach THA, the Thompson Hip Retractor System provides the surgeon with improved confidence for consistent, accurate component placement."

- Lee E. Rubin, MD



Sterile Mount

Mount and adjust the frame within the sterile field, using the Elite Rail Clamp.



Anatomically Designed Frame

Low profile, independent frame arms contour to patient anatomy.



Universal Blade Adapter

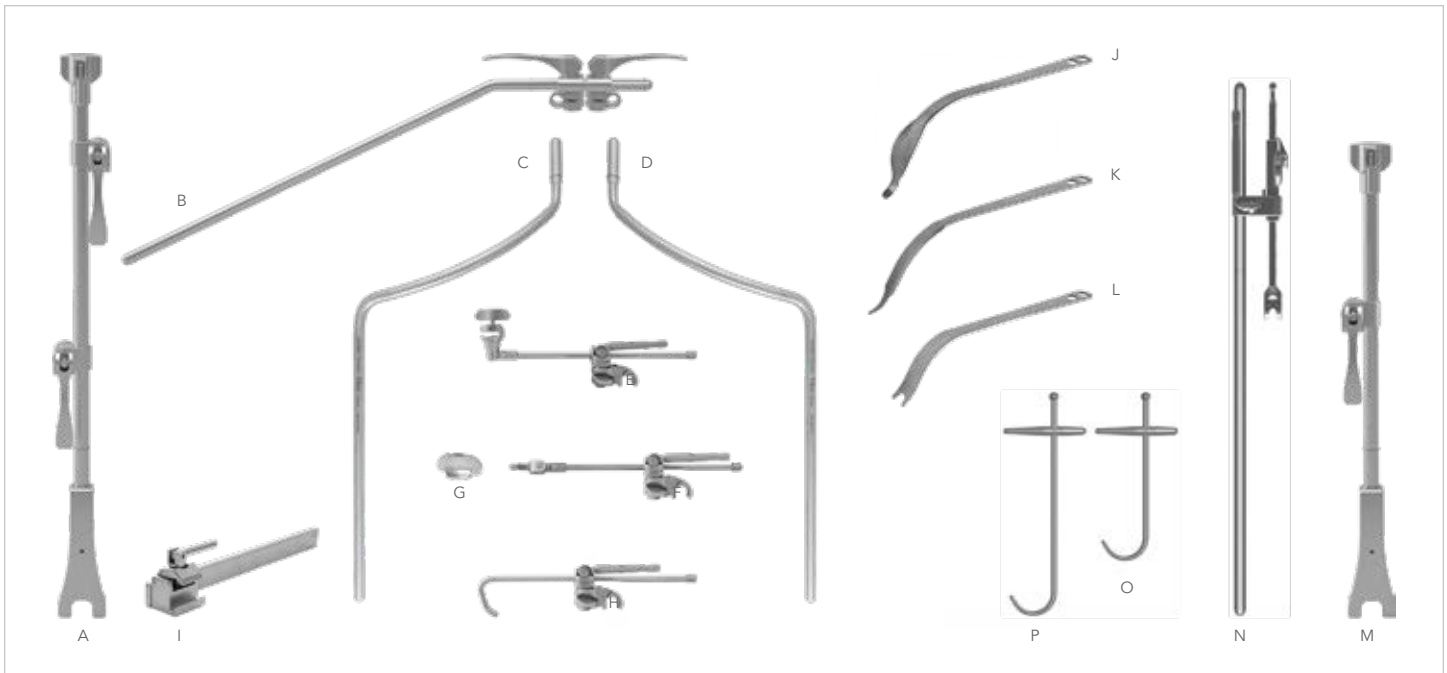
Quick set up, with rigid attachment along flat blade surface.



BLADE NOTICE

The Thompson Hip Retractor system is compatible with most hip retractor blades.

Hip System Components



HIP SYSTEM

#SL82015

REF	QTY	ITEM DESCRIPTION	PART #
A	1	Elite III Rail Clamp w/2 Cam Joints 22"	43905AC
B	1	Crossbar w/2 Cam Joints 7" x 19 1/2"	43990
C	1	20" Curved Arm 1	44201
D	1	20" Curved Arm 2	44202
E	4	Cam II Clip-On Blade Adapter 8 1/2"	42126BP
F	2	Orthopedic Cam II Clip-On 8 1/2"	42126OP
G	3	Orthopedic Retractor Handle Knob	60025
H	1	Orthopedic Cam II Clip-On Hook 8 1/2"	42126OHP
I	1	Rail Extender 20" Single Clamp	41938

REF	QTY	ITEM DESCRIPTION	PART #
J	3	Cobra Hip Blade 11"	45301
K	3	Hohmann Hip Blade 11"	45305
L	3	Dual Prong Hip Blade 11"	45309
M	1	Elite III Rail Clamp w/1 Cam Joint 18"	43902AC
N	1	20" Straight Arm with Elevator Handle	44300
O	1	Femur Hook 9"	44309
P	1	Femur Hook 12"	44312
	1	Instrument Case 26" x 10" x 5"	50000BL
	2	Instrument Case 22" x 11" x 3 1/2"	50000G

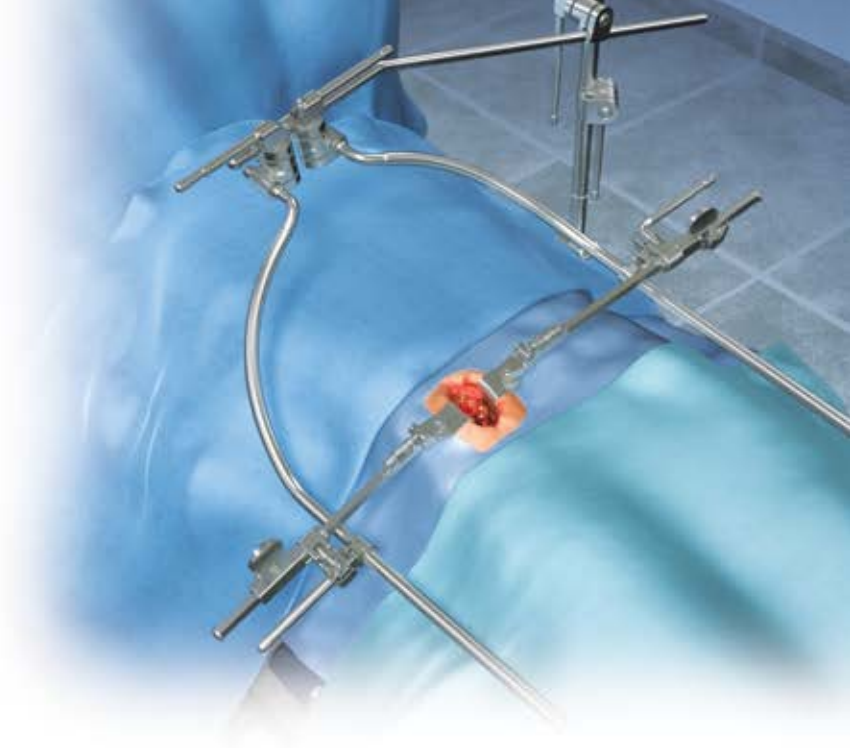
i **FRAME NOTICE**

Add a Rail Extender (#41938) for compatibility with Hana® tables or leg positioning systems such as the Arch system.

Hip Retractor Add-Ons

Complete your system

In addition to our Hip Retractor Frames, Thompson offers a variety of products to facilitate retraction during hip procedures.



"Thompson did it again...perfect!"

- Mark J. Powers, MD, FACS, FAAOS



Femur Elevator

Provides a fast connection and controlled, precise elevation using the micro-adjustable elevator.



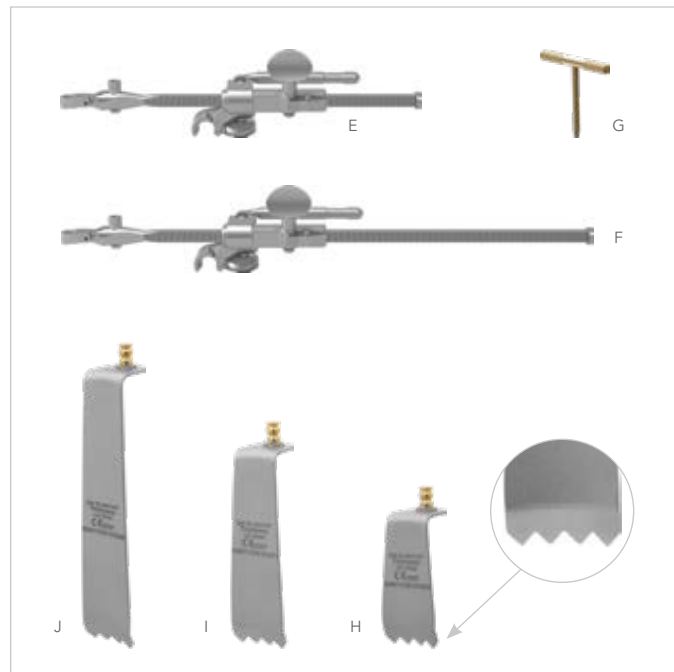
Muscle Retractor Add-On Kit

Provides stable muscle retraction using Micro-Adjustable Handles and a variety of blade depths.



Rail Extender

Allows for compatibility with Hana® Table and leg positioning systems.



FEMUR ELEVATOR SYSTEM

#90025

REF	QTY	ITEM DESCRIPTION	PART #
A	1	Elite III Rail Clamp with 1 Cam Joint 18"	43902AC
B	1	20" Straight Arm w/Elevator Handle	44300
C	1	Femur Hook 9"	44309
D	1	Femur Hook 12"	44312
	1	Instrument Case w/Pin Mat 22" x 11" x 3 1/2"	50000G

MUSCLE RETRACTOR ADD-ON KIT

#SL90060

REF	QTY	ITEM DESCRIPTION	PART #
E	1	Micro-Adjustable Clip-On Quick Angle 10"	SL45006CGP
F	1	Micro-Adjustable Clip-on Quick Angle 15"	SL45006CGRP
G	2	T-Handle	60020
H	2	Hibbs w/Teeth 25mm x 75mm	SL46410T
I	2	Hibbs w/Teeth 25mm x 115mm	SL46414T
J	2	Hibbs w/Teeth 25mm x 165mm	SL46418T
	1	Instrument Case w/Pin Mat 22" x 11" x 3 1/2"	50000G



RAIL EXTENDER *

REF	ITEM DESCRIPTION	PART #
K	Rail Extender 20" Single Clamp	41938

*Add for compatibility with Hana® tables or leg positioning systems such as the Arch system.

i KIT NOTICE

Femur Elevator System is included in the Hip System (#SL82015) but may also be used as a stand-alone retractor.

i KIT NOTICE

Hip System required for use of the Muscle Retractor Kit.

For a Free Trial Call Today*

1.800.227.7543

Rev C
072718
hipcat



Uncompromised Exposure

VISIT US ONLINE: THOMPSONSURGICAL.COM

Thompson
SURGICAL INSTRUMENTS

* Free trial valid for U.S. customers only. International customers please call for more information.

© 2018 Thompson Surgical Instruments, Inc. Traverse City, Michigan.

© S-Lock®, PLA®, and the Thompson "T Circle" logomark are Registered Trademarks of Thompson Surgical Instruments, Inc.

Patents: US4971038, US5025780, US5888197, US5897087, US5902233, US5984865, US6033363, US6416465, US6511423, US7338442, US7749163, US8257255, US8360971, US8617064
Other patents pending.

Made In
USA