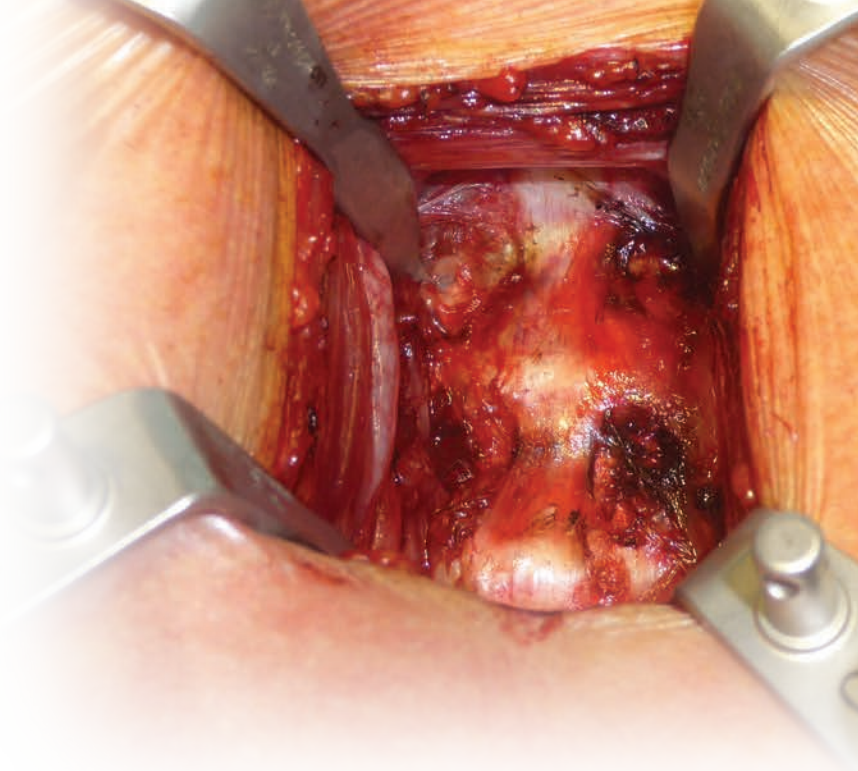


CCA Retractor System

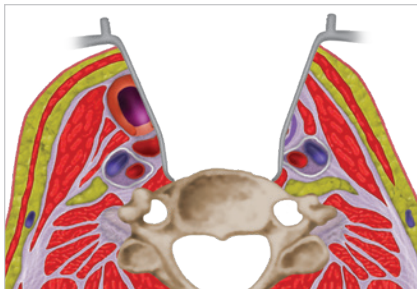
Central Cervical Access

The CCA Retractor was designed with input from Dr. Rudolph Bertagnoli to achieve superior, Uncompromised Exposure of the cervical spine. Unlike any other system, the CCA Retractor has independent bone lever blades that engage the patient's anatomy and expand visualization with minimal retraction and maximum control. Single or multi-level exposure is easily achieved while maintaining the benefits of a minimally invasive and open approach.



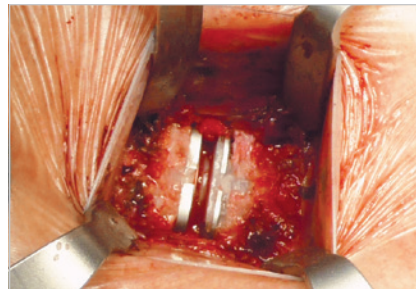
"This exposure allows a perfect unobstructed perpendicular visualization of the cervical spine, resulting in a very easy surgery on vertebrae or discs."

- Prof. Rudolph Bertagnoli, MD



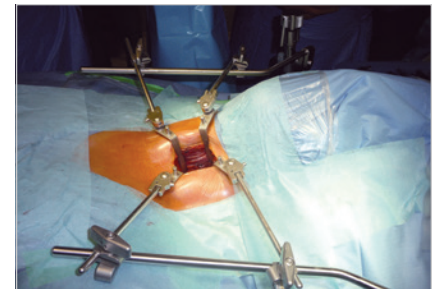
True Central Exposure

Independent blade positioning allows for superior visibility while minimizing retractor migration.



Bone Lever Blades

Tapered distal end anchors to the vertebral body for precise, stable exposure.

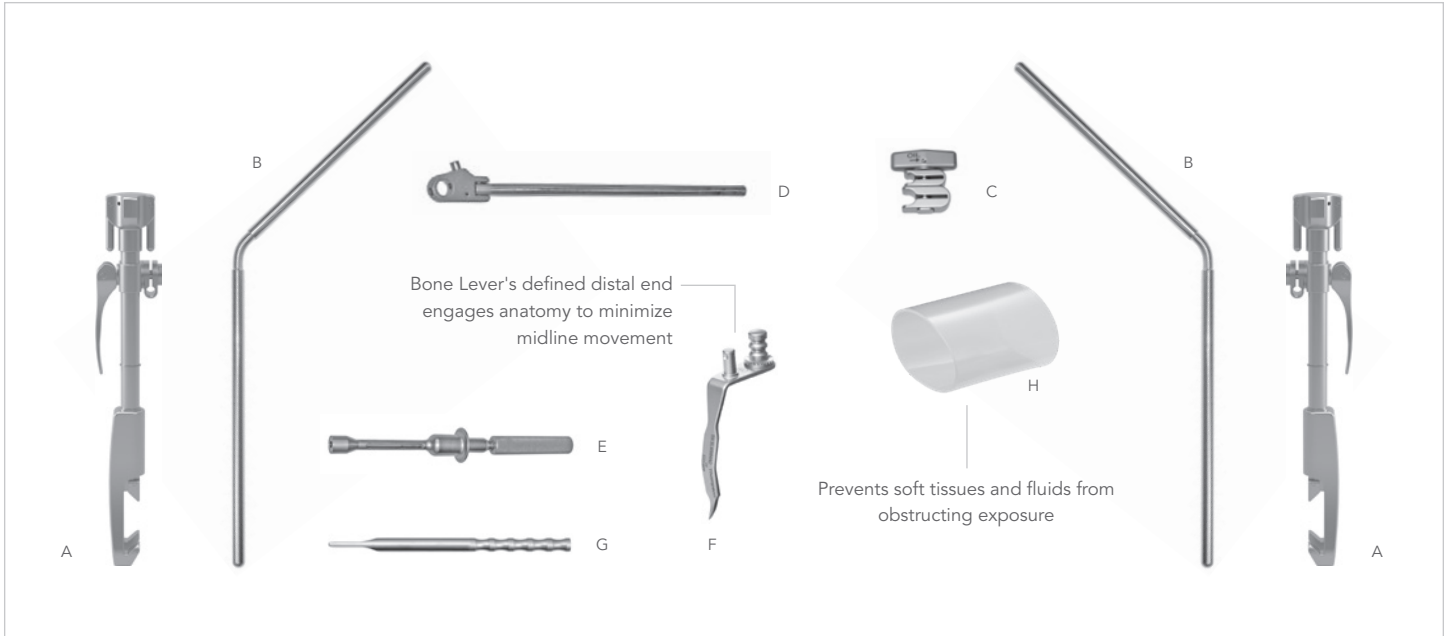


Low Profile Frame

CCA System includes slimmer (3/8" diameter) frame arms and low profile handles to ensure unobstructed visualization.

SYSTEM NOTICE:

CCA Bone Lever blades may also be used with our standard 1/2" frame components. Contact us for information.



CCA RETRACTOR SYSTEM

#SL82018

REF	QTY	ITEM DESCRIPTION	PART #
A	2	Elite III Rail Clamp with 1 3/8" Cam Joint 11"	43902S
B	2	Angled Arm 17" (7" x 10") 3/8"	44117
C	6	Clip-Clip Joint 3/8" x 1/4"	42123
D	4	S-Lock Hinged Handle 8"	SL45003LH
E	2	Manipulator Handle	42128AC
	4	Bone Lever 14mm x 40mm (1/2" x 1 1/2")	SL46982AC
	4	Bone Lever 14mm x 50mm (1/2" x 2")	SL46983AC
F	4	Bone Lever 14mm x 60mm (1/2" x 2 3/8")	SL46984AC
	4	Bone Lever 14mm x 70mm (1/2" x 2 3/4")	SL46985AC
	4	Bone Lever 14mm x 80mm (1/2" x 3 1/8")	SL46986AC
G	1	CCA Depth Gauge	46521
H	2	Silicone Sleeve - Large	64049
	1	Instrument Case - CCA Frame	50000CCAF
	1	Instrument Case - CCA Blades	50000CCAB

CCA RETRACTOR EXPANSION KIT

#80057

REF	QTY	ITEM DESCRIPTION	PART #
C	4	Clip-Clip Joint 3/8" x 1/4"	42123
D	4	S-Lock Hinged Handle 8"	SL45003LH
	4	Bone Lever 14mm x 40mm (1/2" x 1 1/2")	SL46982AC
	4	Bone Lever 14mm x 50mm (1/2" x 2")	SL46983AC
F	4	Bone Lever 14mm x 60mm (1/2" x 2 3/8")	SL46984AC
	4	Bone Lever 14mm x 70mm (1/2" x 2 3/4")	SL46985AC
	4	Bone Lever 14mm x 80mm (1/2" x 3 1/8")	SL46986AC
	1	Instrument Case - CCA Blades	50000CCAB

ACCESSORIES

REF	ITEM DESCRIPTION	PART #
H	Silicone Sleeve - Large (Single Use)	64049
	Rail Extender 15" (2 required for CCA use)	5844



Visit us online: thompsonsurgical.com

For a Free Trial Call **1-800-227-7543** *

* Free trial valid for U.S. customers only. Customers outside the U.S.A., please call +1-231-922-0177 for availability.

© 2020 Thompson Surgical Instruments, Inc.

® S-Lock®, PLA®, and the "T Circle" logomark are Registered Trademarks of Thompson Surgical Instruments, Inc. Patents: tpat.com

Rev E
090220
ccass

