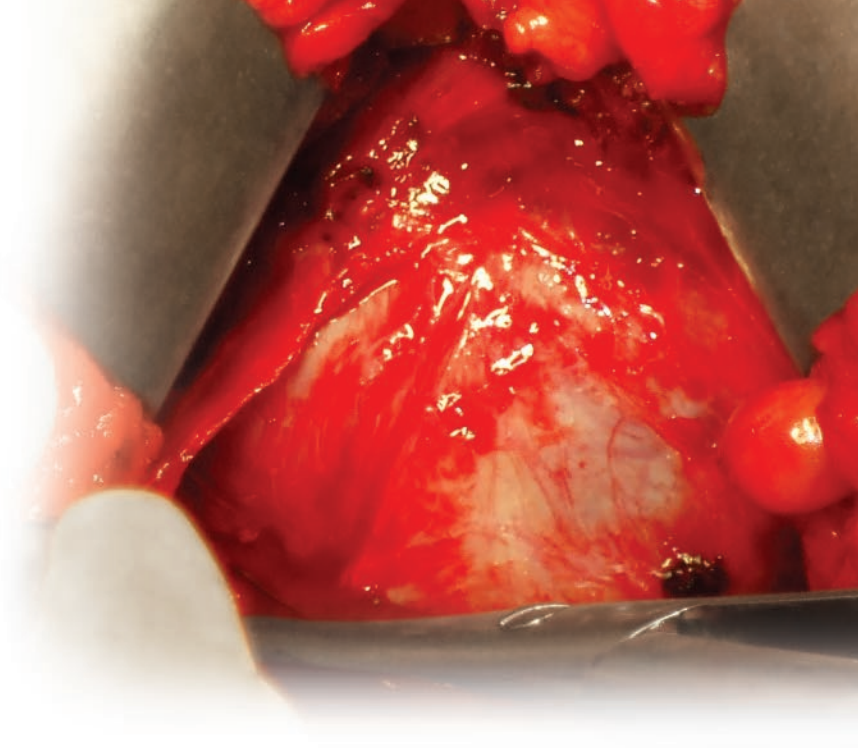


Thompson Retractor

Urologic Oncology System

Uncompromised Urologic Oncology Exposure

The Thompson Urology System provides Uncompromised Exposure for the most complex and widespread urological oncology procedures. System can also be adapted for simple abdominal and perineal procedures.

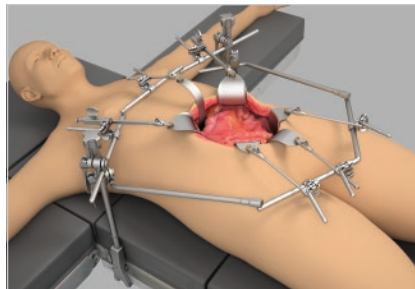


Versatile system for use in urological oncology or simple urology procedures.



Quick Angle Handles

Quickly and precisely angle blades 45° up or down, while the low profile design keeps handles out of the way.



Bilateral Stability and Rigidity

Stability for wide exposures and asymmetrical costal margin retraction.



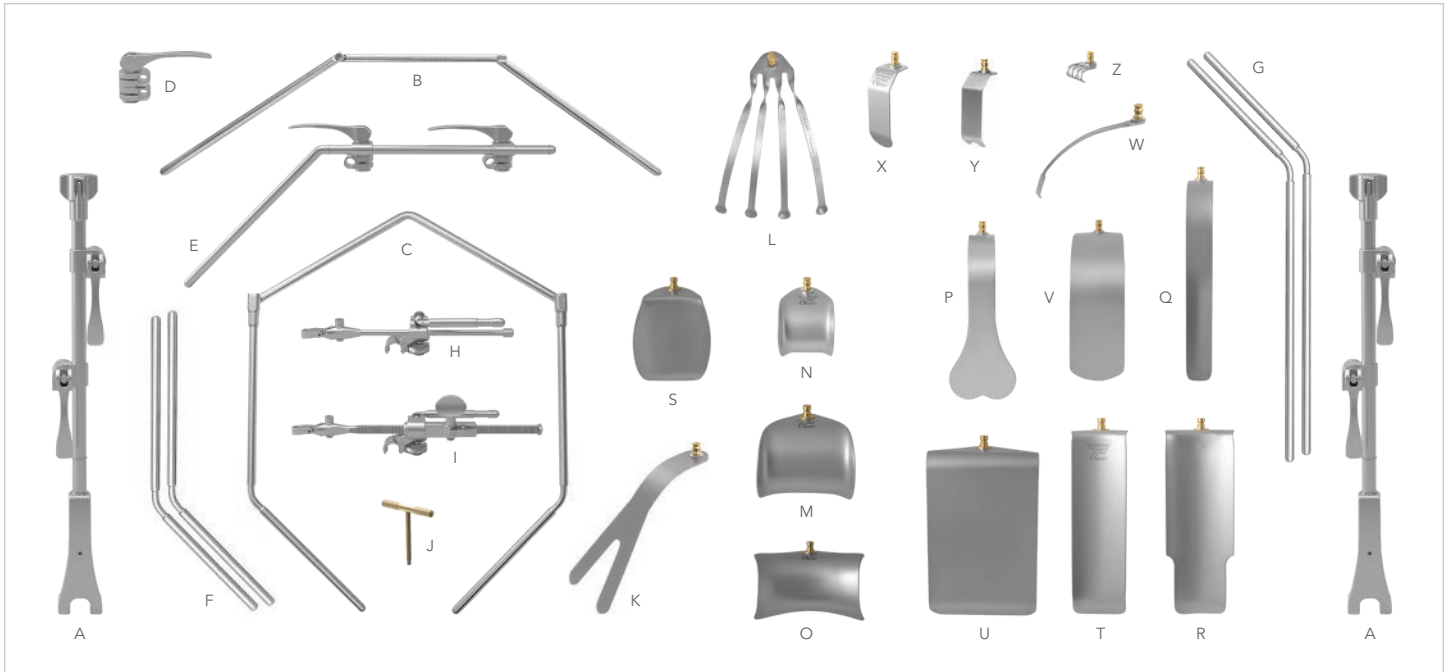
S-Lock® Technology

S-Lock technology reduces unwanted blade swivel and enables precise blade placement. Switch from swivel to locked with the push of a button.



SYSTEM NOTICE:

Smaller, unilateral Urology System (#SL82012) also available.



UROLOGIC ONCOLOGY SYSTEM

#SL82013

| REF | QTY | ITEM DESCRIPTION | PART # |
|-----|-----|--|------------|
| A | 2 | Elite III Rail Clamp w/2 Cam Joints 18" | 43903AC |
| B | 1 | 34" Bilateral Crossbar Hinged (11 1/2" x 8 1/2" x 11 1/2") | 41900PH |
| C | 1 | Lower Abdominal Bar 20" (14" x 6") | 44112SP |
| D | 2 | Cam Joint Serrated 1/2" x 1/2" | 43112C |
| E | 1 | Crossbar w/2 Cam Joints 24" | 43900BC |
| F | 2 | 18" Angled Arm (8" x 10") @ 45° | 44118N |
| G | 2 | 24" Angled Arm (8" x 16") @ 45° | 44124N |
| H | 6 | Cam II Clip-on Quick Angle 8" | SL42126WGP |
| I | 2 | Micro-Adjustable II Clip-on Quick Angle 10" | SL45006CGP |
| J | 2 | T-Handle | 60020 |
| K | 1 | "Y" Bladder 81mm x 216mm (3 1/8" x 8 1/2") | SL46139 |
| L | 2 | Malleable Finger 152mm (6") | SL46191 |
| M | 2 | Balfour [with lips] 83mm x 73mm (3 1/4" x 3") | SO46141 |
| N | 2 | Balfour [with lips] 51mm x 54mm (2" x 2") | SL46142P |
| O | 1 | Wide Balfour 100mm x 61mm (4" x 2 3/8") | SO46241B |

| REF | QTY | ITEM DESCRIPTION | PART # |
|-----|-----|---|-----------|
| P | 1 | Harrington 64mm x 152mm (2 1/2" x 6") | SL46160 |
| Q | 2 | Conc. Renal Vein 25mm x 191mm (1" x 7 1/2") | SL46119C |
| R | 1 | St. Marks [with lip] 64mm x 178mm (2 1/2" x 7") | SO46188 |
| S | 2 | Kelly 76mm x 89mm (3" x 3 1/2") | SO46130 |
| T | 2 | Richardson 51mm x 178mm (2" x 7") | SO46153 |
| U | 1 | Fence 102mm x 152mm (4" x 6") | SO46136 |
| V | 2 | Deaver 51mm x 127mm (2" x 5") | SL46174 |
| W | 1 | Harris Prostate Retractor 8mm (5/16") | SL45753AM |
| X | 2 | Double Angled 25mm x 76mm (1" x 3") | SL46660 |
| | 2 | Double Angled 13mm x 76mm (1/2" x 3") | SL46662 |
| Y | 1 | Double Angled Bulb 25mm x 64mm (1" x 2 1/2") | SL46664 |
| Z | 1 | Murphy Blunt 25mm x 13mm (1" x 1/2") | SL46215 |
| | 2 | Instrument Case | 50000G |
| | 1 | Instrument Case | 50000BL |



Visit us online: thompsonsurgical.com · For a Free Trial Call **1-800-227-7543** *

* Free trial valid for U.S. customers only. Customers outside the U.S.A., please call +1-231-922-0177 for availability.

© 2018 Thompson Surgical Instruments, Inc. Traverse City, Michigan.

© S-Lock®, PLA®, and the "T Circle" logomark are Registered Trademarks of Thompson Surgical Instruments, Inc.

Patents: US4971038, US5025780, US5888197, US5897087, US5902233, US5984865, US6033363, US6416465, US6511423, US7338442, US7749163, US8257255, US8360971, US8617064
Other patents pending.

Rev A
010818
uroloncss

