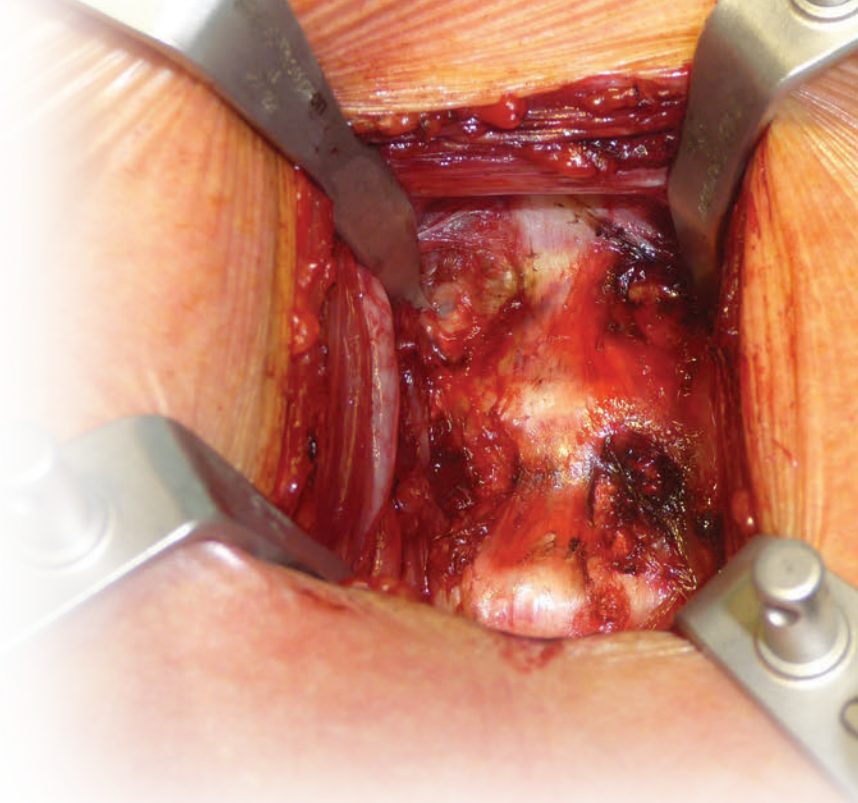


## CCA Retractor System

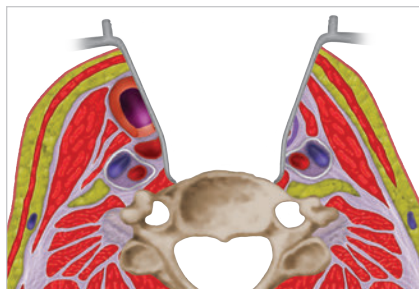
### Central Cervical Access

The CCA Retractor was designed with input from Dr. Rudolph Bertagnoli to achieve superior, Uncompromised Exposure of the cervical spine. Unlike any other system, the CCA Retractor has independent retractor blades that engage the patient's anatomy and expand visualization with minimal retraction and maximum control. Single or multi-level exposure is easily achieved while maintaining the benefits of a minimally invasive and open approach.

Simple, low profile and stable, the CCA Retractor frame provides safe, independent retraction with reduced risk of esophageal and nerve injury.



*Patient benefits include reduced operation time, reduced risk of injury, and faster recovery.*



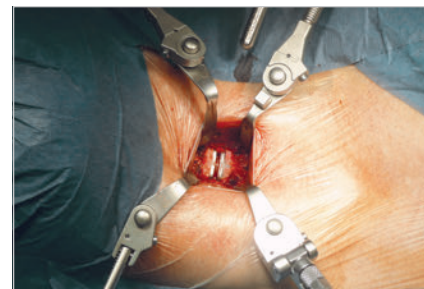
### Superior, Uncompromised Exposure

- Increased surgical accuracy
- Reduced operation time
- Independent, exact blade placement



### Safe and Low Profile

- Independent blade retraction reduces the risk of patient injury
- Low profile handles increase working space
- Blades and handles float with the movement of spine during operation



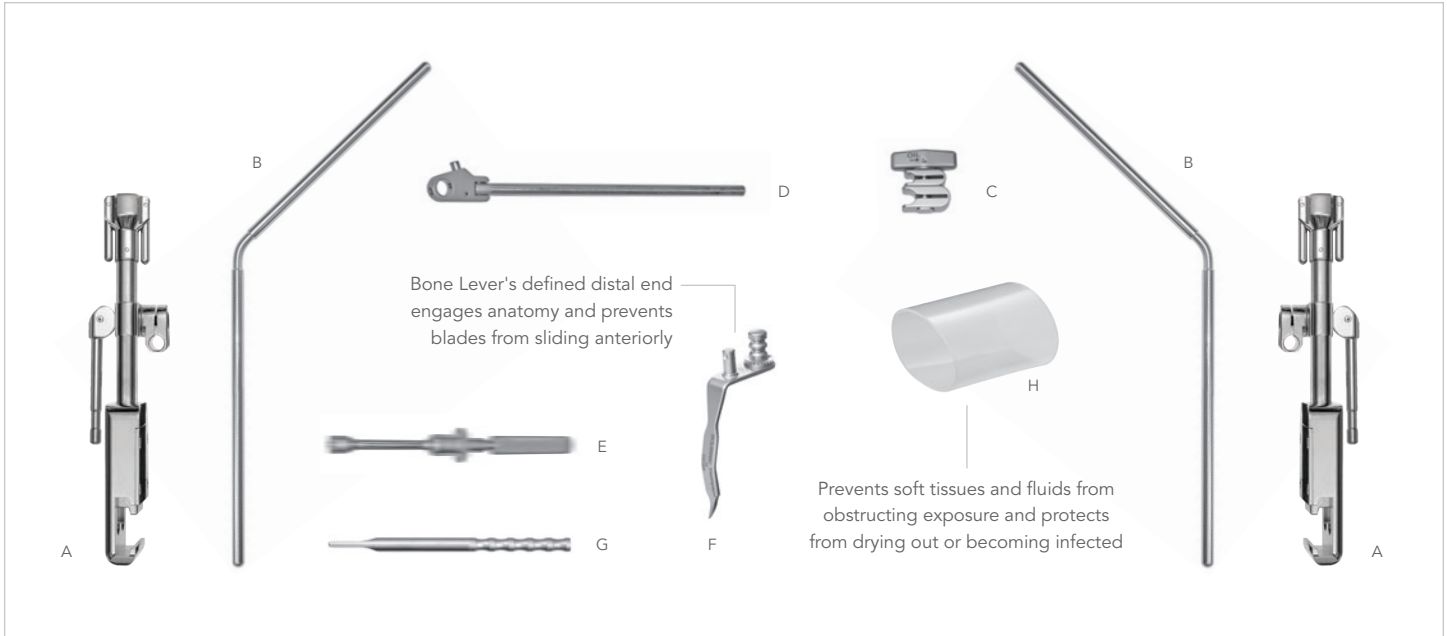
### Versatile and Cost Effective

- Better exposure equals shorter operating time and faster patient recovery
- Applicable to operations requiring single or multi-level exposure
- Independently adjustable arms accommodate all patient sizes



#### SYSTEM NOTICE:

CCA Bone Lever blades may be used with our standard 1/2" frame components. Contact us for information.



**CCA RETRACTOR SYSTEM**

**#80056**

REF	QTY	ITEM DESCRIPTION	PART #
A	2	Elite II Rail Clamp with 1 3/8" Cam Joint 10"	41902S
B	2	Angled Arm 17" (7" x 10") 3/8"	44117
C	6	Clip-Clip Joint 3/8" x 1/4"	42123
D	4	S-Lock Hinged Handle 8"	SL45003LH
E	2	Manipulator Handle	42128AC
	4	Bone Lever 14mm x 40mm	SL46982AC
	4	Bone Lever 14mm x 50mm	SL46983AC
F	4	Bone Lever 14mm x 60mm	SL46984AC
	4	Bone Lever 14mm x 70mm	SL46985AC
	4	Bone Lever 14mm x 80mm	SL46985AC
G	1	CCA Depth Gauge	46521
H	2	Silicone Sleeve - Large	64049
	1	Instrument Case - CCA	50000CCA

**CCA RETRACTOR EXPANSION KIT**

**#80057**

REF	QTY	ITEM DESCRIPTION	PART #
C	4	Clip-Clip Joint 3/8" x 1/4"	42123
D	4	S-Lock Hinged Handle 8"	SL45003LH
	4	Bone Lever 14mm x 40mm	SL46982AC
	4	Bone Lever 14mm x 50mm	SL46983AC
F	4	Bone Lever 14mm x 60mm	SL46984AC
	4	Bone Lever 14mm x 70mm	SL46985AC
	4	Bone Lever 14mm x 80mm	SL46986AC
	1	Instrument Case - CCA	50000CCA

**ACCESSORIES**

REF	ITEM DESCRIPTION	PART #
H	Silicone Sleeve - Large (Single Use)	64049
	Silicone Sleeve - Small (Single Use)	64047
	Rail Extender 15" (2 required for CCA use)	5844



Visit us online: [thompsonsurgical.com](http://thompsonsurgical.com)

For a Free Trial Call **1-800-227-7543** \*

\* Free trial valid for U.S. customers only. Customers outside the U.S.A., please call +1-231-922-0177 for availability.

© 2017 Thompson Surgical Instruments, Inc. Traverse City, Michigan.

© S-Lock®, PLA®, and the "T Circle" logomark are Registered Trademarks of Thompson Surgical Instruments, Inc.

Patents: US4971038, US5025780, US5888197, US5897087, US5902233, US5984865, US6033363, US6416465, US6511423, US7338442, US7749163, US8257255, US8360971, US8617064  
Other patents pending.

Rev A  
052417  
ccass

