

Thompson Retractor

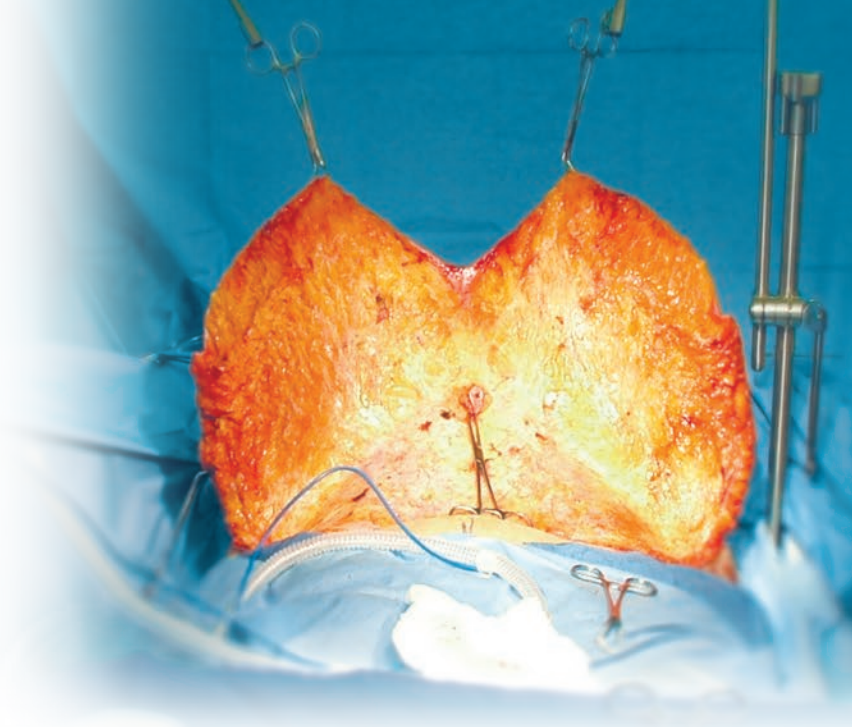
Body Contouring System

Uncompromised Exposure for Plastic Surgery

The Body Contouring System can be used in smaller procedures, such as tummy tucks, to large procedures, such as panniculectomies.

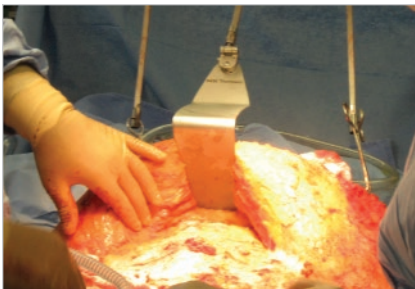
SYSTEM BENEFITS

- Fatigue free retraction
- Easier, controlled dissection
- Free up staff
- Maintain sterile field
- Multi-function for a variety of body lifts



*The Thompson Body Contouring System, when used bilaterally *, will support 200lbs for 12+ hours.*

* Bilateral set-up includes two rail clamps and two Towel Clip Micro-Adjustables. Testing was done independent of towel clips which are not sold by Thompson. Multiple towel clips may be necessary to support 200lbs in conjunction with this frame set up.



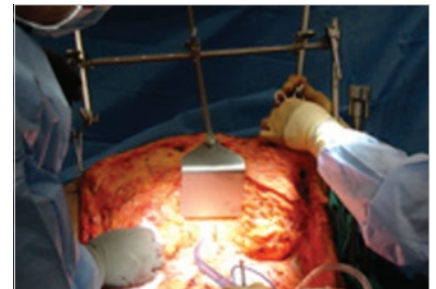
Tummy Tuck Blades

Tummy Tuck blades provide abdominal exposure.



Micro-Adjustable Technology

Patented Micro-Adjustable Handles enable increased leverage and precise retraction with micro-adjustability.



Bilateral Expansion Kit

Recommended for panni weighing over 25lb, the Bilateral Expansion Kit creates additional stability.



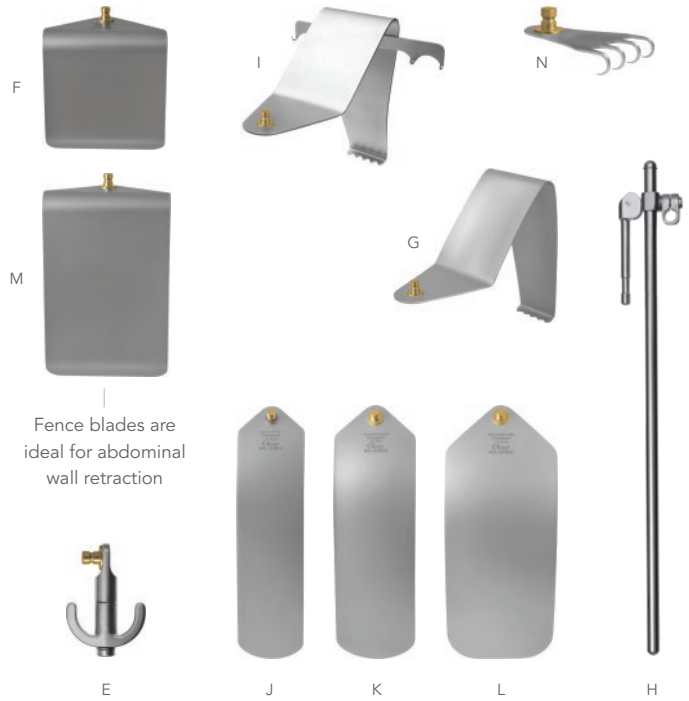
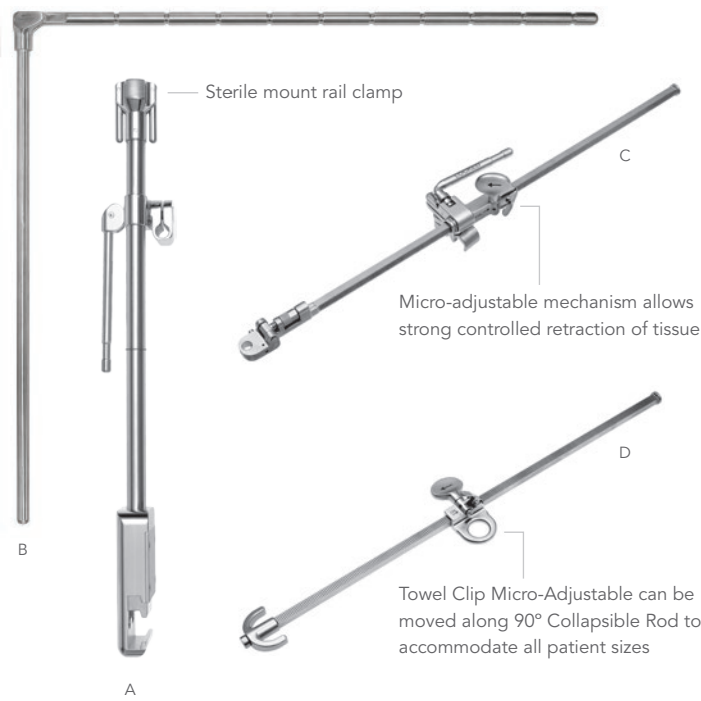
SYSTEM NOTICE:

If using a Hercules table, add a second #44734 Collapsible 90° Rod with Grooves.



SYSTEM NOTICE:

Non-S-Lock system still available, but may require a longer lead time. Please call for more information.



S-LOCK BODY CONTOURING SYSTEM #SL80043

REF	QTY	ITEM DESCRIPTION	PART #
A	1	Elite II Rail Clamp with 1 Cam Joint 22"	41904AC
B	1	Collapsible 90° Rod with Grooves	44734
C	1	Micro-Adjustable II Clip-on Angling 20 1/2"	SL45007P
D	2	Towel Clip Micro-Adjustable	35028
	2	Angling Head Wrench	43032
E	1	Towel Clip Hook	SO48001
F	1	Fence 102mm x 102mm (4" x 4")	SO46134
G	1	Tummy Tuck 76mm x 140mm (3" x 5 1/2")	SO46400
	1	Instrument Case 26" x 10" x 5"	50000BL

S-LOCK BILATERAL EXPANSION KIT * #SL80044

REF	QTY	ITEM DESCRIPTION	PART #
A	1	Elite II Rail Clamp with 1 Cam Joint 22"	41904AC
H	1	Straight Arm with 1 Cam Joint 20" (50cm)	44120C
	1	Instrument Case 26" x 10" x 5"	50000BL

* The Bilateral Expansion Kit is recommended for pannus weighing over 25 lbs. and offers greater stability

S-LOCK ACCESSORY BLADE KIT #SL80043A

REF	QTY	ITEM DESCRIPTION	PART #
I	1	Saldanha Arched 76mm x 140mm (4" x 5 1/2")	SO46103
J	1	Malleable 64mm x 254mm (2 1/2" x 10")	SL46124
K	1	Malleable 76mm x 254mm (3" x 10")	SO46124A
L	1	Malleable 102mm x 254mm (4" x 10")	SO46124B
M	1	Fence 102mm x 152mm (4" x 6")	SO46136
	1	Tummy Tuck 102mm x 140mm (4" x 5 1/2")	SO46401
N	1	Cat's Paw 6mm x 64mm (1/4" x 1 1/4")	SO46402



Visit us online: thompsonsurgical.com

For a Free Trial Call **1-800-227-7543** *

* Free trial valid for U.S. customers only. Customers outside the U.S.A., please call +1-231-922-0177 for availability.

© 2017 Thompson Surgical Instruments, Inc. Traverse City, Michigan.

© S-Lock®, PLA®, and the "T Circle" logomark are Registered Trademarks of Thompson Surgical Instruments, Inc.

Patents: US4971038, US5025780, US5888197, US5897087, US5902233, US5984865, US6033363, US6416465, US6511423, US7338442, US7749163, US8257255, US8360971, US8617064

Other patents pending.

Rev C
081417
bccs

